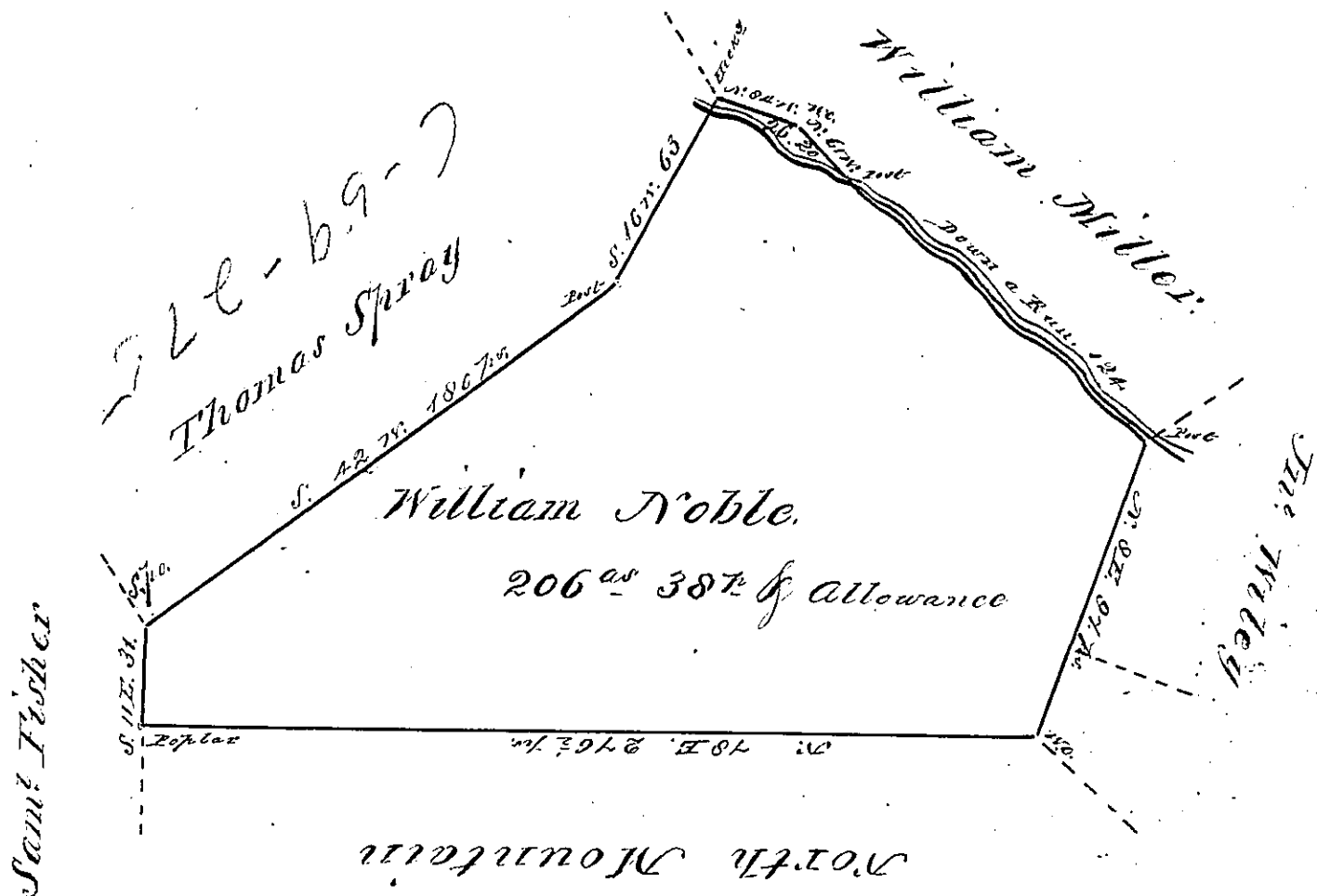


UPSIDE DOWN



A draught of a Tract of Land Situate in East Pennsboro Township in the County of Cumberland, Containing Two Hundred & six acres & 38 perches and an allowance of one per cent for Roads &c. Resurveyed Oct 8th 1768 in Pursuance of the Honble. the Proprietaries Warrant dated June 7th 1750.

To John Lukens Esq^r }
 Surveyor General. }

John Armstrong
 S.

IN TESTIMONY that the above is a copy of the original remaining on file in the Department of Internal Affairs of Pennsylvania, made conformably to an Act of Assembly approved the 16th day of February, 1833, I have hereunto set my Hand and caused the Seal of said Department to be affixed at Harrisburg, this
 Thirtieth day of February 1877

Wm. C. Anderson

Secretary of Internal Affairs